



DOCTORAL STUDENT CAITLIN MATEKEL WITH ARIZONA DEPT OF CORRECTIONS, REHABILITATION, AND REENTRY STAFF: DWOP ANNEMARIE SMITH-WHITSON, COIII DEBORA BRENNAN, AND COIII LORI SCOTT

**ARIZONA STATE UNIVERSITY**

**CENTER FOR  
CORRECTIONAL  
SOLUTIONS**

# THE ASU CENTER FOR CORRECTIONAL SOLUTIONS



## A LITTLE BIT ABOUT OUR CENTER

The Center for Correctional Solutions launched in the spring of 2018. We are located within the School of Criminology and Criminal Justice, within the Watts College of Public Service and Community Solutions, at Arizona State University. Our mission is to enhance the lives of people living and working in our correctional system through research, education, and community engagement. We welcome the opportunity to collaborate further in each of these areas.

---

# TABLE OF CONTENTS

## **COMPLETED RESEARCH.....3**

- Managing Violent Misconduct in Restrictive Status Housing
- Treating the Seriously Mentally Ill in Prison
- Reducing Recidivism in Arizona
- Hypermasculinity and Incarceration

## **EDUCATION.....5**

- Inside-Out Prison Exchange Program
- Correctional Programming & Policy at Red Rock
- Freshmen Project-Based Learning

## **COMMUNITY ENGAGEMENT.....7**

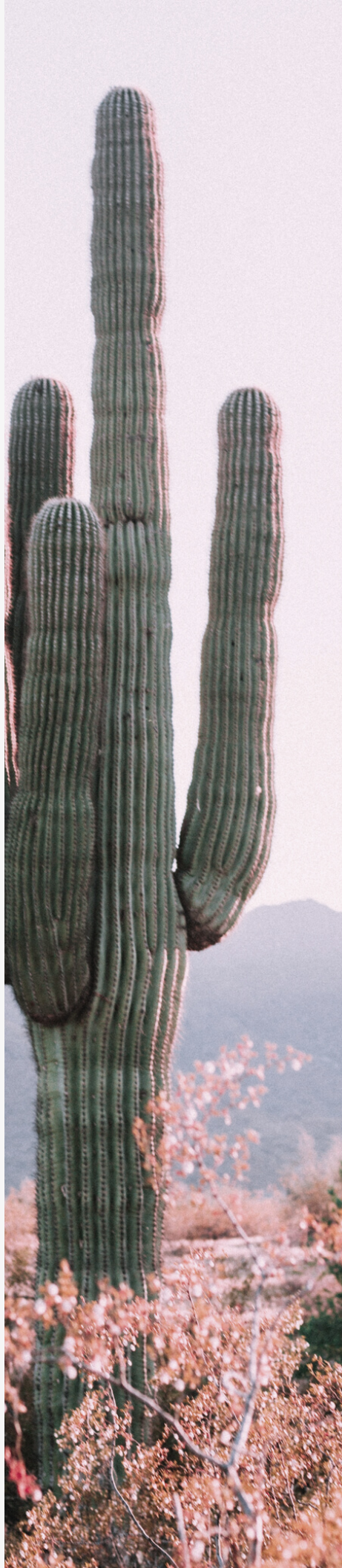
- Arizona Transformation Project
- Incarcerated Art Show
- Prison Chopped

## **ONGOING PROJECTS.....9**

- Altering Administrative Segregation for Inmates and Staff
- An Evaluation of Arizona's Community Reentry Coalitions
- An Evaluation of Moral Reconciliation Therapy for Security Threat Group Members
- An Evaluation of Arizona's Housing Pilot for Formerly Incarcerated Individuals
- Enhancing the Prison Environment: A Participatory Action Research Approach
- An Evaluation of Arizona's Second Chance Centers
- An Evaluation of Motivational Interviewing Training for Correctional Officers
- Putting Second Chances to Work
- Entrepreneurial Mindset Training

## **MEMBERS & CONTACT INFO.....11**

## **PUBLICATIONS.....13**



# COMPLETED RESEARCH

**Collaboration for Impact**



We produce and disseminate knowledge that improves service delivery in the correctional system. We develop competitive grant proposals that leverage the interdisciplinary nature of the CCS ASU and National affiliate faculty to support graduate students and faculty research.

We provide evaluation research that leads to solutions to critical problems faced by the correctional system. We develop implications of findings that recognize the constraints of living and working in the correctional system and present to agency partners in digestible briefs and presentations.

We train undergraduate and graduate students to develop and carry out solutions-driven research in collaboration with partner agencies. CCS graduates have the “outside knowledge” of what works in corrections as identified in research and the “inside knowledge” of the perspectives and experience of people who live and work in the correctional system.

**WE CONDUCT USE-INSPIRED RESEARCH IN COLLABORATION WITH OUR COMMUNITY PARTNERS TO ACHIEVE OUR GOALS TOGETHER**



## MANAGING VIOLENT MISCONDUCT IN RESTRICTIVE STATUS HOUSING

This study explored behavioral outcomes of a restrictive status housing program at the state prison in Florence through interviews with former program participants and program staff. The findings suggest to incorporate more incentives for positive behavior and "booster sessions" to prevent future misconduct, as well as to capitalize on peer-mentors to overcome resource deficits.

## TREATING THE SERIOUSLY MENTALLY ILL IN PRISON

This study evaluated, over a 1-year period, an in-prison program that incorporated a contingency management approach to the treatment of adult males who had significant mental health needs. The findings suggest that the program presents a promising first step in understanding effective approaches to the treatment of mental illness.



## REDUCING RECIDIVISM IN ARIZONA

This study determined what works to reduce recidivism in Arizona as told by prisoners to prisoners. The findings suggest that meaningful employment, job training, and trade opportunities while in prison would reduce recidivism and make for a more positive and supportive prison environment. Additionally, mentorship is critical at all stages of imprisonment and reentry.

## HYPERMASCULINITY AND INCARCERATION

This study examined the barriers that exist to engagement in programming and the rehabilitative process during incarceration with an emphasis on incorporating the perceptions of incarcerated men. The findings suggest that the prison code and masculinity attitudes indirectly influence program engagement, the yard environment can support rehabilitative efforts, and reasons for program participation can influence the program quality.



---

# EDUCATION

## Preparing the Leaders of Tomorrow



We develop innovative approaches to learning at the undergraduate and graduate level that take students outside of the classroom and into the surrounding community.

We create opportunities to educate and train students to become leaders in the workforce of the correctional system—giving them the outside knowledge of “what works” combined with the inside knowledge of the challenges of living and working in the correctional system.

We improve the opportunities for success of formerly incarcerated individuals in the workforce and in educational settings.

**ENHANCING THE LIVES  
OF STUDENTS  
THROUGH EMPOWERMENT,  
DELIBERATE PRACTICE,  
AND SERVICE TO OTHERS.**

# INSIDE-OUT PRISON EXCHANGE PROGRAM

The Inside-Out Prison Exchange Program at Arizona State University brings together university students and incarcerated individuals to learn about issues of crime and justice over a semester in a prison setting. Classes have been held at the state prisons in Florence and Perryville.

Learn more at [ccj.asu.edu/io](http://ccj.asu.edu/io)



# CORRECTIONAL PROGRAMMING & POLICY SEMINAR

ASU graduate students learned half-time at ASU in a traditional academic manner and then learned half-time at the Red Rock Correctional Facility in Eloy to see whether "what works" in the academic literature was effective in practice.

# FRESHMEN PROJECT-BASED LEARNING

Freshmen students addressed the challenge of how to reduce recidivism rates in Arizona. They spent the fall semester learning about the challenge from formerly incarcerated people, correctional staff, and through tours of the state prison in Florence and the Maricopa Reentry Center. During the spring semester they produced their solution: a prison art show to raise money for at-risk youth.



# COMMUNITY ENGAGEMENT

Impacting Our Community Through Empowering Dialogues



We develop and facilitate internship opportunities that provide our students with education and training and provide our partners with motivated students who can contribute to the agency's mission.

We combine the academic knowledge of faculty and students with the knowledge of lived experiences of people who are incarcerated to produce innovative solutions to problems that have traditionally relied on one source of knowledge over the other.

We educate the general public on both the challenges experienced by people in the correctional system and the difficulties faced by correctional administrators and staff in addressing the risks and needs of people who are in the system.

**WE ARE SOCIALLY  
EMBEDDED WITHIN  
OUR COMMUNITIES,  
AND WE WORK  
TOGETHER WITH OUR  
PARTNERS TO  
ACHIEVE OUR GOALS**



# ARIZONA TRANSFORMATION PROJECT

A think tank composed of ASU faculty and students and incarcerated Inside-Out alumni from at the East Unit of the state prison in Florence. ATP works to produce and maintain high-quality learning opportunities that will make our communities and correctional facilities more just and socially aware through collaboration, dialogue, and transformative experiences.

**Learn more at [aztransform.org](http://aztransform.org)**



## INKARCERATED ART SHOW

In partnership with the Arizona Department of Corrections, Rehabilitation, and Reentry (ADCRR), the Center has created a program that offers the general public the opportunity to purchase art created by incarcerated individuals. This program grew out of the immensely popular Inkarcipated art show at the Unexpected Art Gallery in May of 2017, with a second show taking place in August of 2019. The program has raised over \$13,000 for children's charities.

## PRISON CHOPPED

CCS has showcased our award winning workshop "Prison Chopped" to the Next Generation Leaders at the McCain Institute, high-level donors at the annual President's Retreat, and student members of the Next Generation Service Corps. This hands-on presentation introduces unique insights on leadership, inclusivity, and critical thinking derived from our work with individuals experiencing incarceration.



# ONGOING PROJECTS



## ALTERING ADMINISTRATIVE SEGREGATION FOR INMATES & STAFF

This project, sponsored by the U.S. Department of Justice, represents one of the most ambitious and rigorous assessments of restrictive housing to date. Over 900 interviews have been conducted with incarcerated men, focusing on changes to their mental health over a one year period. Another 200 surveys with staff examine the impact of working in restrictive housing on their mental health.

2

## AN EVALUATION OF ARIZONA'S COMMUNITY REENTRY COALITIONS

This project, sponsored by the U.S. Department of Justice, evaluates the ADCRR's efforts toward building and facilitating reentry coalitions across the state. Social network analyses will determine the effectiveness of these coalitions and make suggestions for their improvement.

3

## AN EVALUATION OF MORAL RECONATION THERAPY

This project, sponsored by the U.S. Department of Justice, evaluates the impact of moral reconnection therapy provided to incarcerated men with a history of violence and security threat group involvement.

4

## AN EVALUATION OF ARIZONA'S HOUSING PILOT

This project, in collaboration with the AZ Department of Housing, evaluates the impact of housing vouchers provided to people leaving prison on recidivism rates. People leaving prison are randomly assigned to receive assistance with halfway house rent to determine whether this aids in their successful reintegration to society.



5

## ENHANCING THE PRISON ENVIRONMENT: A PARTICIPATORY ACTION RESEARCH APPROACH

Incarcerated men from the Arizona Transformation Project work alongside CCS faculty and researchers to develop, implement, and analyze survey data on prison life. The incarcerated men will interview their fellow men on the yard on topics such as their interactions with staff, how they find purpose and meaning in their life, and how they think life in prison can be improved.

6

## AN EVALUATION OF ARIZONA'S SECOND CHANCE CENTERS

This project, sponsored by the National Governor's Association via Arnold Ventures, will develop an evaluation plan and path forward for enhancing the existing Second Chance Centers in the state to promote recidivism reduction.

7

## AN EVALUATION OF MOTIVATIONAL INTERVIEWING TRAINING IN CO'S

This project, sponsored by the Department of Justice, evaluates the ADCRR's efforts to train correctional officers and staff to use motivational interviewing in their work. To date, over 700 surveys have been completed on use of motivational interviewing in daily work for the ADCRR.

8

## PUTTING SECOND CHANCES TO WORK: ENTREPRENEURIAL MINDSET TRAINING

This project, sponsored by the ASU Watts College of Public Service and Community Solutions, develops, implements, and evaluates entrepreneurial mindset programming provided to women incarcerated at the state prison in Perryville.

---

# MEMBERS & CONTACT INFORMATION

## THE CENTER FOR CORRECTIONAL SOLUTIONS TEAM



**DR. KEVIN WRIGHT**  
DIRECTOR  
ASU ASSOCIATE PROFESSOR  
(602) 496-1294  
KEVINWRIGHT@ASU.EDU



**DR. JACOB YOUNG**  
ASSOCIATE DIRECTOR  
ASU ASSOCIATE PROFESSOR  
(480) 965-0745  
JACOB.YOUNG.1@ASU.EDU

### DR. KEVIN WRIGHT

Kevin Wright is director of the Center for Correctional Solutions and an associate professor in the School of Criminology and Criminal Justice at Arizona State University. His work focuses on enhancing the correctional environment for people working and living in prison and creating opportunities for formerly incarcerated men and women. His published research on these topics has appeared in *Justice Quarterly*, *Criminology & Public Policy*, and *Journal of Offender Rehabilitation*. He developed and taught the first Inside-Out Prison Exchange Program class in the state of Arizona and is a co-founder of the Arizona Transformation Project. He has secured more than \$1 million in external funding to support his research at the local, state, and federal levels. The ASU Committee for Campus Inclusion named him a 2017 Catalyst Award winner, the Arizona Department of Corrections Rehabilitation and Reentry named him Education Volunteer of the Year for the Florence Complex in 2018, and in 2019 the ASU Faculty Women's Foundation named him an Outstanding Faculty Mentor.

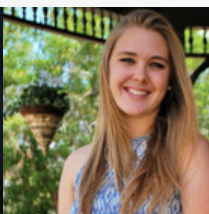
### DR. JACOB YOUNG

Jacob Young is associate director of the Center for Correctional Solutions and an associate professor in the School of Criminology and Criminal Justice at Arizona State University. His research examines how the structure of social networks influence behavior across a variety of contexts as well as identifying the mechanisms by which social networks develop and evolve. His published research on these topics has appeared in the *American Sociological Review*, *Criminology*, *Justice Quarterly*, *Social Networks*, and *Journal of Quantitative Criminology*. He has developed and taught courses in the analysis of network data and the application of network science to criminology and criminal justice. He is a member of the Prison Inmate Network Studies (PINS), an ongoing, multi-site study of the social networks among male and female inmates and the implications of network position on re-entry. He has secured nearly \$1 million in external funding from the National Science Foundation, National Institutes of Health, and National Institute of Justice.

# CENTER MEMBERS



DANIELLE  
HAVERKATE  
*PhD Student*



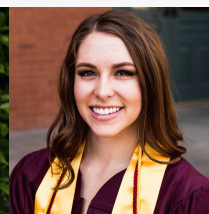
STEPHANIE  
MORSE  
*PhD Student*



CAITLIN  
MATEKEL  
*PhD Student*



RAVEN  
SIMONDS  
*PhD Student*



MADISON  
SUTTON  
*MS Student*



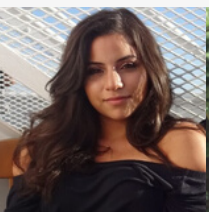
BIANCA  
RODRIGUEZ  
*MS Student*



GENEVIEVE  
MCKENZIE  
*Undergraduate*



SHAYLA  
EVANS  
*Undergraduate*



SANDY  
MOSHI  
*Undergraduate*



ALEXIS  
KLEMM  
*Undergraduate*

# ASU AFFILIATES



DR. CODY  
TELEP  
*Policing*



DR. ADAM  
FINE  
*Juvenile  
Delinquency*



DR. ASHLEY  
RANDALL  
*Counseling  
Psychology*



DR. ANDREA  
MONTES  
*Corrections*



DR. TESS  
NEAL  
*Psychology  
& Law*



DR. STACIA  
STOLZENBERG  
*Child  
Maltreatment*

# NATIONAL AFFILIATES



DR. CHERYL  
JONSON  
*Xavier*



DR. DANIELLE  
RUDES  
*George Mason*



DR. TRAVIS  
MEYERS  
*UTSA*



DR. SARA  
WAKEFIELD  
*Rutgers*

To learn more about our work please visit:

✉ [CCS@ASU.EDU](mailto:CCS@ASU.EDU)

🐦 [CCS\\_ASU](https://twitter.com/CCS_ASU)

📷 [CCS\\_ASU](https://www.instagram.com/CCS_ASU)

📘 [ASU CENTER FOR  
CORRECTIONAL SOLUTIONS](https://www.asu.edu/ccs)

🌐 [HTTP://CCJ.ASU.EDU/CCS](http://ccj.asu.edu/ccs)

---

# PUBLICATIONS

## ARTICLES

- Wright, Kevin A. In Press. "Time Well Spent: Misery, Meaning, and the Opportunity of Incarceration." *The Howard Journal of Crime and Justice*.
- Morse, Stephanie J., and Kevin A. Wright. In Press. "Imprisoned Men: Masculinity Variability and its Implications for Correctional Programming." *Corrections: Policy, Practice, and Research*.
- Meyers, Travis J., Aryn A. Infante, and Kevin A. Wright. In Press. "Treating the Seriously Mentally Ill in Prison: An Evaluation of a Contingency Management Program." *Corrections: Policy, Practice, and Research*.
- Haverkate, Danielle L., and Kevin A. Wright. In Press. "The Differential Effects of Prison Contact on Parent-Child Relationship Quality and Child Behavioral Changes." *Corrections: Policy, Practice, and Research*.
- Telep, Cody W., Kevin A. Wright, Danielle L. Haverkate, and Travis J. Meyers. 2020. "The Value of Participatory Action Research in Corrections: Introduction to the Special Issue." *Corrections: Policy, Practice, and Research*, 5, 1-5.
- Haverkate, Danielle L., Travis J. Meyers, Cody W. Telep, and Kevin A. Wright. 2020. "On PAR with the Yard: Participatory Action Research to Advance Knowledge in Corrections." *Corrections: Policy, Practice, and Research*, 5, 28-43.
- Davidson, Kimberly M., and Jacob T.N. Young. 2019. Treatment Engagement in a Prison-Based Therapeutic Community: A Mixed-Methods Approach. *Journal of Substance Abuse Treatment*, 103 (August), 33-42.
- Meyers, Travis J., Aryn A. Infante, and Kevin A. Wright. 2018. "Addressing Serious Violent Misconduct in Prison: Examining an Alternative Form of Restrictive Housing." *International Journal of Offender Therapy and Comparative Criminology*, 62, 4585-4608.

## BOOK CHAPTERS AND ENCYCLOPEDIA ENTRIES

- Walls, Elisabeth, and Kevin A. Wright. 2020. "Victims within the Correctional System." In *Victims of Violence: For the Record*, edited by William S. Parkin and Peter A. Collins, pp. 61-96. San Diego, CA: Cognella Academic Publishing.
- Pfeffer, Rebecca, and Kevin A. Wright. 2019. "The Inside-Out Prison Exchange Program." In *American Prisons and Jails: An Encyclopedia of Controversies and Trends*, edited by Vidisha B. Worley and Robert M. Worley, pp. 341-345. Santa Barbara, CA: ABC-CLIO.
- Kreager, Derek A., Martin Bouchard, George De Leon, David R. Schaefer, Michaela Soyer, Jacob T.N. Young, and Gary Zajac. 2018. "A Life Course and Networks Approach to Prison Therapeutic Communities." In *Social Networks and the Life Course*, edited by Duane F. Alwin, Diane H. Felmlee, and Derek A. Kreager, pp. 433-451. New York, NY: Springer.
- Wright, Kevin A., and Cassandra Philippon. 2018. "Prison Outreach/Exchange Programs." *Oxford Bibliographies of Criminology*.
- Wright, Kevin A., and Cheryl Lero Jonson. 2018. "Thinking Outside the Prison Walls: The Value of the Inside-Out Prison Exchange Program to Solve Old Problems" In *Criminology and Public Policy*, third edition, edited by Scott H. Decker and Kevin A. Wright, pp. 321-340. Philadelphia, PA: Temple University Press.
- Wright, Kevin A., and Natasha Khade. 2018. "Offender Recidivism." In *Routledge Handbook of Corrections in the United States*, edited by O.H. Griffin and Vanessa H. Woodward, pp. 494-502. New York, NY: Routledge.

---

## STUDENT THESES AND DISSERTATIONS

- Rodriguez, Bianca. 2020. *"I Feel Like I'm About to Walk out of Prison Blindfolded": Prison Programming and Reentry*. Master's Thesis.
- McKenzie, Genevieve. 2020. *Pathways to Second Opportunities: A Training to Increase Support for Formerly Incarcerated Individuals in the University Setting*. Honors Thesis.
- Johnson, Brianna. 2020. *Users and Abusers: Self Identification of Substance (Ab)use Among Incarcerated Men*. Honors Thesis.
- Moore, Deana. 2019. *Ending a Cycle: Effects of a Pre-release Program on Recidivism*. Master's Thesis.
- Malone, Taryn. 2019. *Prison Dogs: A Second Chance for Two Species*. The Honors Thesis.
- Meyers, Travis. 2018. *Managing Violent Misconduct in Prison: Processes and Outcomes in a Restrictive Status Housing Program*. Doctoral Dissertation.
- Tometich, Drake. 2018. *Dissolving the Dichotomy of Private and Public Prisons: Lending Credence to the Innovative Potential*. Honors Thesis.
- Quirbach, Rachel. 2018. *The Walls are Alive with the Sound of Music: Music Therapy Techniques for Incarcerated Persons*. Honors Thesis.
- Smith, Wesley. 2018. *Correctional Officer Punitiveness, Self-Control and Rehabilitative Training*. Master's Thesis.
- Matekel, Caitlin. 2018. *Conditions of Confinement, Personality Traits, and Inmate Perceptions of Procedural Justice*. Master's Thesis.
- Philippon, Cassandra. 2018. *Sending Students to Prison: An Impact Evaluation of the Arizona Inside-Out Prison Exchange Program*. Master's Thesis.

## REPORTS

- Wright, Kevin A. 2018. "Re-Entry and Recidivism." Paper prepared for Arizona Town Hall 2018. Available at: [http://www.aztownhall.org/111\\_Town\\_Hall](http://www.aztownhall.org/111_Town_Hall)

# SHOW YOUR SUPPORT!

**Interested in supporting our students and the important work we do at the Center for Correctional Solutions?**

Make your donation at:  
**[asufoundation.org/asuinside-out](http://asufoundation.org/asuinside-out)**



Enhancing the lives of  
people living and working in  
our correctional system  
through research, education,  
and community  
engagement.